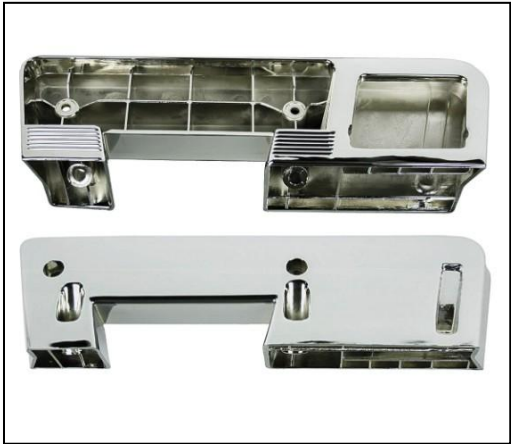


EARLY MODEL STUFF: 1960-1964 Corvair Front Chrome Armrest Base, Pair – (NOT ORIGINAL FOR 500 & 700) Fitment includes Wagons! I picked up these bases years ago when I was redoing my Spyder. Never did use them, so my loss is your gain. Clark’s part C2002 which go for \$25.75 each (+shipping), \$40 for the pair here.



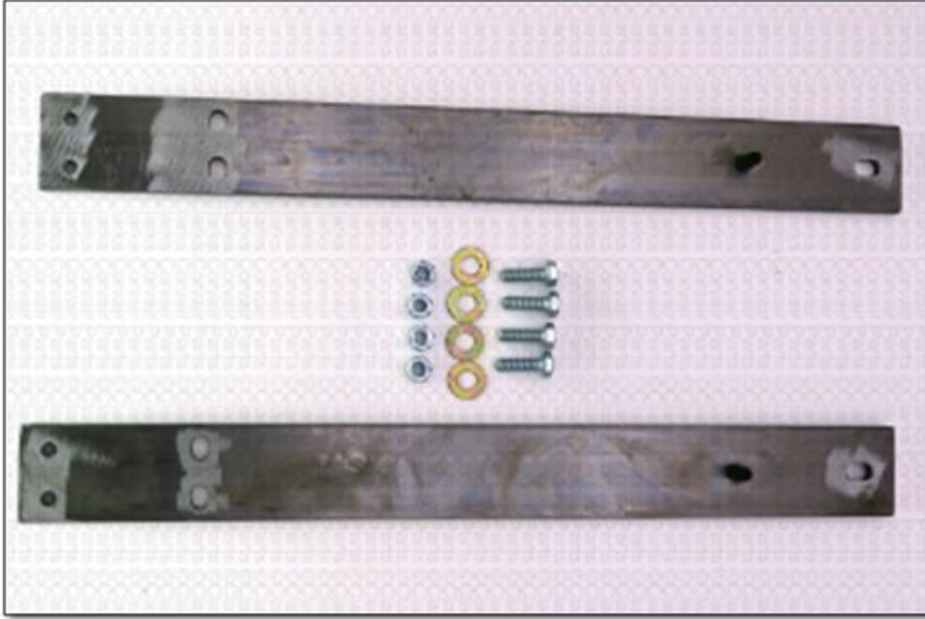
Vehicle Fitment	
Year Make Model	Application Details
1964–1967 Buick Skylark	front (sedan)
1964–1967 Chevrolet Chevelle	front
1960–1964 Chevrolet Corvair	front
1964–1967 Chevrolet El Camino	front
1964–1967 Oldsmobile Cutlass	front, sedan
1960–1964 Pontiac Bonneville	1962–1964: Front - all exc. Bonneville Brougham
1960–1967 Pontiac Catalina	1962–1964: Front - all exc. Bonneville Brougham 1965–1967: Front - Catalina
1962–1967 Pontiac Grand Prix	1962–1964: Front - all exc. Bonneville Brougham
1964–1967 Pontiac GTO	front
1961–1967 Pontiac LeMans	front
1961–1967 Pontiac Tempest	front

EARLY MODEL STUFF: 1960-1964 Corvair Rear Chrome Armrest Base, left and right side, I have 2 Pair – The fitment includes Wagons! These are the ones with the ash tray holes (ash trays not included). Clark’s part C8143 which go for \$62.50 a pair (+ shipping). \$40 for each pair here.



Vehicle Fitment	
Year Make Model	Application Details
1964–1967 Buick Skylark	rear (sedan)
1964–1967 Chevrolet Chevelle	rear
1960–1964 Chevrolet Corvair	rear
1964–1967 Oldsmobile Cutlass	rear, sedan
1960–1967 Pontiac Bonneville	1960–1964: Rear - Bonneville & Catalina 2-dr. sedans & 4-dr. 1965–1967: Rear - Bonneville & Catalina 2-dr. sedans
1960–1967 Pontiac Catalina	1960–1964: Rear - Bonneville & Catalina 2-dr. sedans & 4-dr. 1965–1967: Rear - Bonneville & Catalina 2-dr. sedans 1965–1967: Rear - Catalina 4-dr. sedans
1964–1967 Pontiac GTO	rear (exc. convertible)
1961–1967 Pontiac LeMans	rear (exc. convertible)
1961–1967 Pontiac Tempest	rear (exc. convertible)

EARLY or LATE MODEL STUFF: Corvair Seat Extenders for Tall Drivers from Clarks (1 set) – Hey guys, here's a real quick way to add 3" to the distance between the front of the seat and your pedals. No more bruised knee caps getting in and out of the car cause now you'll be 3" further back from the steering column and dash ☺ . Clark's says these only fit '62-'69 cars/wagons (does not fit forward control vans/trucks). One set works for 1 bucket seat, or 1 bench seat. Clark's part C8256, which goes for \$116.40 today (+ shipping). A special garage clean out price of \$100. Nah, since it's still close to the holiday season, let's make it **\$75** so some tall guy can drive his Vair in comfort this car this coming year.



EARLY MODEL STUFF: Corvair '60-'64 & '61-'65 FC Battery Tray – Clarks says these are slightly thicker than the original, so you may need to trim it down a little if you're putting it in a wagon. Clark's Part # C6826, runs \$23.95 (+ shipping). **\$10 and it's yours.**



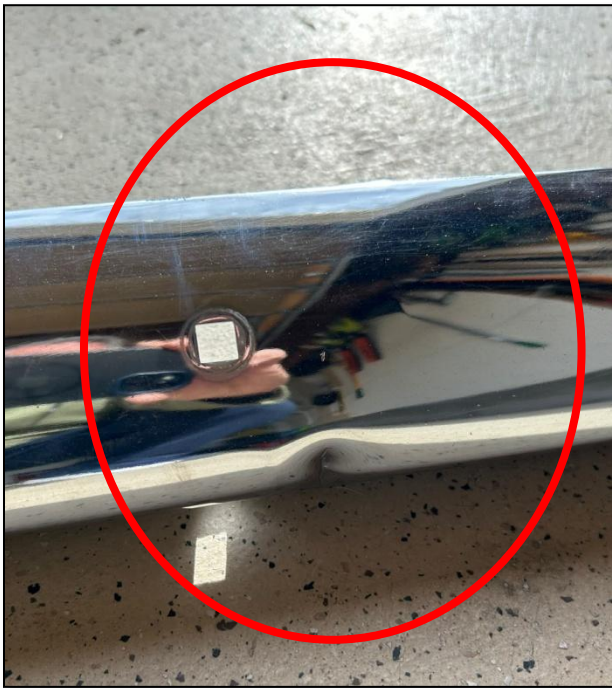
EARLY MODEL STUFF: Corvair Used Dipstick for Wagon or Forward Control – Tough to find, when you can find them, especially with that little round doo-dad at the end of the stick ☺ Clark's Part # CU590 (and of course they're out of stock) runs \$12 (+ shipping). **\$5 and this one, in excellent shape, is yours.**



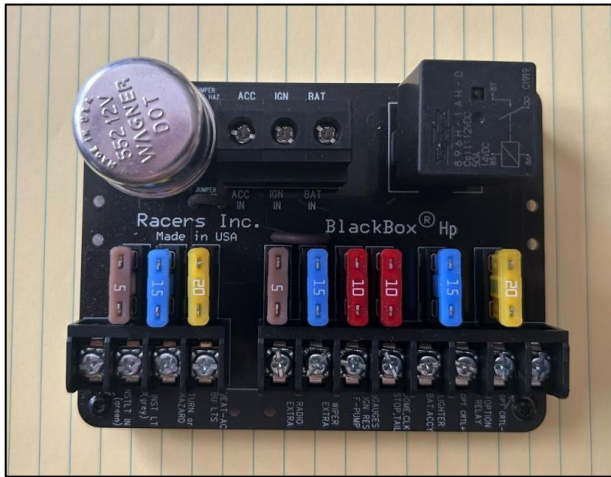
EARLY MODEL STUFF: Corvair '61-'64 Steel Trunk Bottom, 19-20 GA - Was going to use this on my convertible, but was able to patch it sufficiently with other metal work. This is Clark's Part # C4778A which runs \$142.70 today (+shipping) (they're asking \$299 for a NOS panel! YIKES!!) **\$125** puts it in your garage and not mine ☺



EARLY MODEL STUFF: Corvair '60-'64 Front Bumper – Used, in good shape, has dent on driver side (wasn't my fault). If your front bumper is rusted out, this is a quick improvement before car show season comes up. **\$5**



EARLY MODEL STUFF: Corvair '60-'64 - WB-15 "Blackbox Hp" OE Replacement Fuse Panel, from Racers Inc – Hello 21st century!! This 9-fuse panel design is not a reproduction; it upgrades the original 5-7 fuse panel with nine modern ATO fuses; more fuses than original Corvair panels. The BlackBox Hp also has an option-relay for those who want to get creative and use it to power a fuel pump, headlights, or most any other medium-current accessory. Illustrated, high-quality instructions take the installer through the process step by step, and installation usually takes 60-90 minutes. Brand new and in the box, this is the upgraded fuse panel that sells through several CORSA channels, as well as on line @ <https://www.racersrods.com/product-p/wb-15-corvair.htm> I originally bought this to redo the fuse panel in my '63 convertible, but now the car is gone, so this has got to go as well. Currently \$165 (+ shipping), yours for **\$120 out the door** here.



EARLY MODEL STUFF: Corvair '61 – '62 Wagon Interior Side Panels/ Covers – Acquired over the years, I have four side panel/covers for the Wagon (three left side panels, and one right side one), with one set having an embossed pattern. These are the panels that cover the left side battery box and the right side compartment, back behind the rear wheel wells. They're not in great shape, and I can't use them, so **FREE to good home** if you need a spare, or at least a temporary solution to cover the compartment.

